



# Green Cover of GNDU

Guru Nanak Dev University  
Amritsar



राष्ट्रीय मूल्यांकन एवं प्रत्यायन परिषद

विश्वविद्यालय अनुदान आयोग का स्वायत्त संस्थान

**NATIONAL ASSESSMENT AND ACCREDITATION COUNCIL**

*An Autonomous Institution of the University Grants Commission*

# *Certificate of Accreditation*

*The Executive Committee of the  
National Assessment and Accreditation Council  
on the recommendation of the duly appointed  
Peer Team is pleased to declare the  
Guru Nanak Dev University  
Amritsar, Punjab as  
Accredited  
with CGPA of 3.51 on four point scale  
at A grade  
valid up to December 09, 2021*

*Date : December 10, 2014*



*D. Singh*  
Director



Preserve

Protect  
Environment

Save

Er. S.K.Goyal  
M.E. (Env.), FIE (India)  
Sr. Env. Engineer(Retd.)  
Punjab Pollution Control Board(PPCB)



EIA Co-ordinator (QCI)  
Chartered Engineer,PPCB

### Certificate

Certified that a team of faculty members & students, under the leadership of **Prof. Ashwani Luthra, Director IQAC** of Guru Nanak Dev University, Amritsar has conducted a detailed **Environmental Green Audit of various Green Initiatives taken by the university** covering different aspects such as Green Cover, Green Mobility, Air Quality Monitoring, Water and Wastewater Management, Green Energy Initiatives, Solid Waste Management, Bio-Medical Waste Management, and E-Waste Management, for the preservation and protection of environment in its campus. Data and credentials in the report have been scrutinised and are found **Satisfactory**.

Efforts made by the leadership, faculty and students of the University towards environment and sustainability are commendable and worth appreciating.

Dated: NOV.25,2021

  
(Er. Samarjit K. Goyal)  
Chartered Engineer  
Pb Pollution Control Board

# CENTRE FOR SCIENCE AND ENVIRONMENT

MAIN OFFICE: 41, Tughlakabad Institutional Area, New Delhi-110 062 INDIA

Tel: 2995 5124, 2995 6110, 2995 6394, 2995 6399 Fax: 91-11-2995 5879 Email: [cse@cseindia.org](mailto:cse@cseindia.org) Website: [www.cseindia.org](http://www.cseindia.org)

BRANCH OFFICE: Core 6A, Fourth Floor, India Habitat Centre, Lodhi Road, New Delhi-110 003

Tel: 2464 5334, 2464 5335



LEAVES  
OF  
IMPORTANT  
SURVIVAL  
TREES  
IN  
INDIA —  
MAHUA,  
KHEJDI,  
ALDER,  
PALMYRA  
AND  
OAK

November 29, 2021

The Coordinator  
Centre for Sustainable Habitat  
Guru Nanak Dev University  
Amritsar

## Subject: Certification for different Audits under Green Campus Initiatives

Dear Sir,

From the past six years, Centre for Science and Environment (CSE) and Guru Nanak Dev University (GNDU) Amritsar have been working together on CSE's Green Campus Initiative and audit programme. Under this engagement, CSE has supervised multiple environmental audits and trained the faculty, staff and students at GNDU as well as other universities and colleges across India. The results and outcomes of this engagement have been published by CSE in multiple reports such as 'A Green Campus Compendium: Incubation, Experimentation and Demonstration of a Green Future' and 'Green Campus Movement'. Appreciation letters have also been shared at the various stages of this programme. CSE appreciates that the faculty at GNDU has prepared the following audit reports:

1. Green Cover of GNDU
2. Green Mobility Initiatives
3. Air Quality Monitoring
4. Liquid Waste Management
5. Green Energy Initiatives
6. Solid Waste Management
7. Bio-Medical Waste Management
8. E-Waste Management

CSE commends GNDU's efforts towards realising Sustainable Development Goals and extends its full support and expertise in its future endeavours.

Yours' cordially,

Rajneesh Sareen  
Programme Director  
Sustainable Buildings and Habitat Programme  
Centre for Science and Environment

## **Preface**

Guru Nanak Dev University Campus is known for its lush green landscape. It encases variety of green, ornamental and medicinal trees and shrubs. A team led by Dr. Avinash Nagpal, Professor, Botanical and Environmental Sciences and Dr. Jaswinder Singh Bilga, Consultant (Horticulture) along with their students and staff have attempted to audit the tree cover of the University for Internal Quality Assurance Cell, GNDU. The report showcases the unique work to identify the varieties of trees and shrubs planted in the lawns, botanical garden and other forest lands of the university.

## CONTENTS

| Sl. No. | Title                       | Page No. |
|---------|-----------------------------|----------|
|         | Guru Nanak Dev University   | 1        |
| 1       | The Context                 | 3        |
| 2       | Land Use and Green Spaces   | 3        |
| 3       | Tree Audit                  | 5        |
| 4       | Glimpses of Spices of Trees | 8        |



## GURU NANAK DEV UNIVERSITY



With the glorious history of past fifty years, Guru Nanak Dev University was established at Amritsar on November 24, 1969 to mark the Birth Quincentenary of Sri Guru Nanak Dev Ji, the apostle of universal brotherhood, truthfulness, non-violence, compassion, tolerance, harmony, humanity, strict observance of moral & ethical values in daily life, who is also revered as the founder of Sikhism. It won't be an exaggeration to state that His teachings and preaching & His own personal life are perfect examples to be emulated by the entire mankind even after about four and half a centuries and will remain so eternally. Ever since its foundation the endeavour of the university has always been to meet the objectives enshrined in the Guru Nanak Dev University Act 1969, which emphasized that the new University would make provision for imparting education and promoting research in the humanities, learned professions, sciences, especially of applied nature and technology. Studies and research on the life and teachings of Guru Nanak, in addition to working towards the promotion of Punjabi language and spreading education among educationally backward classes and communities are the other commitments. In consonance with these expectations, the university in its eventful history of 50 years has taken long strides in spreading the message of Guru Nanak Dev ji and promoting education in such fields as Science, Arts, Management, Information Technology, Industrial Technology, Environment, Planning and Architecture. To fulfil its commitment, tuition fee charged from the students of the Guru Nanak Studies and the School of Punjabi Studies departments has been waived. The UGC conferred this University with status of “University with Potential for Excellence” in 2012. The National Assessment and Accreditation Council (NAAC), Bangalore in November 2014 reaccredited the university in 3<sup>rd</sup> cycle with CGPA of 3.51 out of 4 point scale at “A++” grade, the highest in the region.

Guru Nanak Dev University is a high performing state public university as it has improved its ranking from 80 in 2017 to 51 in 2020 among all Central, Public and Private Universities in the country (NIRF, MHRD, GoI). It is reckoned among top 9% universities of the world and top 10 state public universities of India by Centre for World University Ranking (CWUR), a leading international agency engaged in grading the top ranking universities world-wide since 2012. QS I-GAUGE Rating System has rated the university in the Diamond Category in the field of ‘research, faculty quality and infrastructure’ by the. It was also shortlisted for the University of the Year Award in the 16<sup>th</sup> FICCI Higher Education Summit 2021 organized by FICCI jointly with the Ministry of Education and Ministry of Commerce & Industry, Government of India. High quality research has improved the H-index of the university from 64 to 119 with top 10 percent highly cited papers in Scopus. The university is placed among the top 4 Institutions in Punjab and 10 Institutions in North India by Nature Index,

The University today boasts of 43 teaching departments at the Campus and 149 affiliated colleges, 16 Constituent & University Colleges and 53 Associate Institutes, many of which are located in the rural areas. The university has always strived hard to make the benefits of higher education accessible to the rural masses. More than twenty thousand students, an overwhelming majority of them being women, are enrolled in various Departments at University Campus and Constituent Colleges. On-line admission,

on-line counselling, on-line re-evaluation, introduction of Credit Based Continuous Evaluation Grading System etc. are a few hallmarks of the university. All the results have been computerized and OMR (Optical Magnetic Recognition) system is being used to bring in more efficiency and transparency. This is the first University in the region to have computerized its examination and registration system. The students now have an all-time access to their results through SMS service. It acts as a model higher education institution for digital initiatives like e-office management system, digital library, Wi-Fi enabled campus, high speed online teaching modules, and smart classrooms to name a few.

Academically also, the university has carved a niche for itself in the field of Higher Education in the country. Our University is recognized as one of the leading institutions in North India in the domain of Science and Technology. Many coveted projects from the apex bodies like the DST, CSIR, BARC and other organizations worth crores of rupees have been awarded to our faculty members. One of the four Nodal Calibration Centres established by Bhabha Atomic Research Centre is set up at our campus. The Centre of Emerging Life Sciences equipped with the state-of-the-art scientific instruments worth crores of rupees, well-maintained Botanical Garden, Department of Sports Medicine & Physiotherapy are a few of the jewels in the crown of the university. To more strengthen the university infrastructure and to prepare students for employments, computer lab with the help of TCS is also established. Further, the UGC has granted the University the Centre with Potential for Excellence in Life Sciences and Centre for Advanced Study in Chemistry.

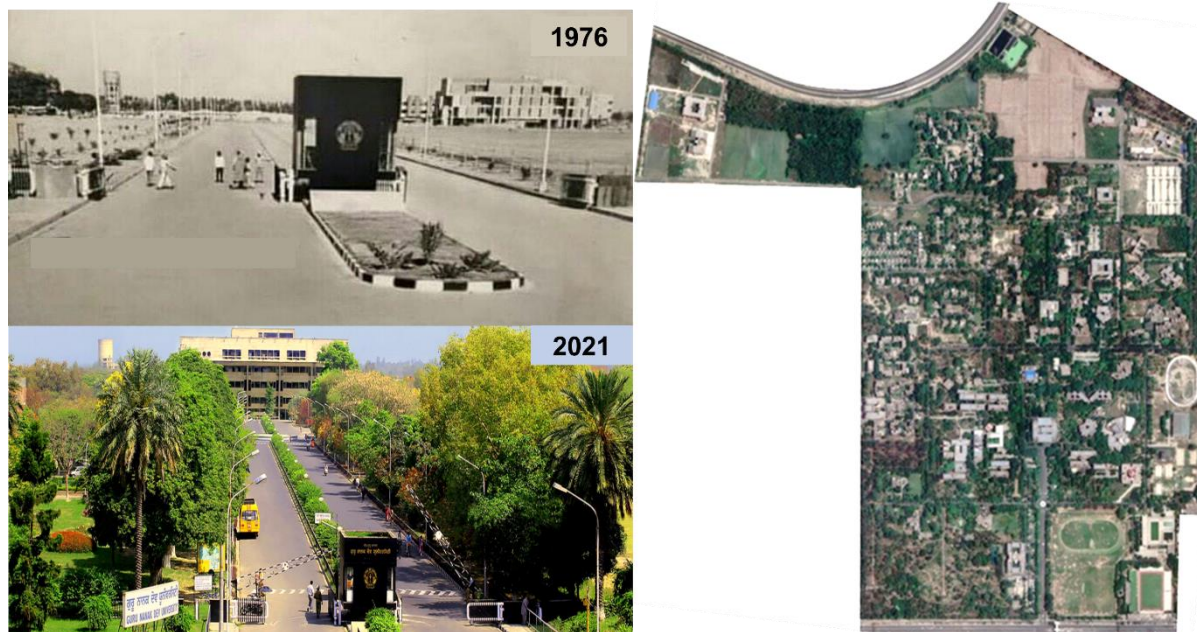
In the field of culture and sports also, the achievements of the university are noteworthy. The university has been national Champion for 10 times & the winner of the North-Zone-Inter-Varsity Cultural Championship for 13 times. The winning of the coveted Maulana Abul Kalam Azad Trophy, the highest sports award for a university in the country, for a record number of 23 times, speaks volumes about its supremacy in the field of sports. An Astro Turf for hockey, a swimming pool of international standards, a velodrome, a Gymnasium hall, shooting range & many other state-of-the art sports facilities are the prized possessions of the university. The Lifelong Learning Department of the university is successfully catering to the female folk of the region to make them self-dependent by offering various skill development programmes. The Track record of employment of our students by big business Houses and Multi-National Companies has been very satisfactory. Our students of engineering, management and commerce field are employed by companies in India and abroad. They are all contributing to the creditworthiness of the University by their hard work and diligence. In the last year alone, almost all our engineering and management students were recruited by various companies through campus placements. It goes without saying that all these achievements would not have been achieved, but for the heart and soul put in by the students, faculty members, and administration of the university. Undoubtedly, the university remains committed to achieve the lofty goals, for which it was founded after the name of Sri Guru Nanak Dev Ji.

The university is known for its GREEN CAMPUS initiatives in the field of energy, water, solid waste management, micro mobility and health and hygiene. Some of the key initiatives of the university are energy efficient buildings, rooftop solar energy plant, solar water heaters, sensor based urinals, toilets and wash basins, maintenance of lawns as water recharge systems, rooftop rainwater harvesting, on campus sewerage water treatment plant, organic waste management through bio-gas plant and vermin-compositing, natural processing to convert agro-waste into compost, involvement in recycling and reuse of paper, plastic, mettle and other waste, efficient medical waste management, regular thickening of tree cover by planning tree each year, making the campus car free, facilitating the students, staff and the visitors by free of charge e-vehicle facility for micro mobility within the campus, developing lush green covered footpaths, regular sweeping of the roads and buildings at least twice a day and regular disinfectant spray to help the university bag the second cleanest State University in India awarded by the Ministry of Human Resource Development, Government of India under Swachh Campus Ranking for the last two years continuously.



## 1. The Context

Green spaces are known as the lungs on the earth as they freshen the air and make the mankind live a healthy life. Guru Nanak Dev University in Amritsar acts as a huge lung space for the city due to its lush green cover of variety of trees, shrubs and other plants. Once a barren land has been converted into a green parcel having thick green cover of trees and green lawns. Continuous plantation of trees each year presents it as a models of rigorous effort towards reducing the carbon footprints to meet the targets of sustainable development goal number 13 i.e. climate change. The vistas and avenues created by thick tree cover along its roads present spectacular views and walk throughs in the campus.



## 2. Land Use and Green Spaces

Majority of the land area of the university is kept under green cover. Only 37.58 acres out of 500 acres of the total land of the campus is built. The remaining 462.42 acres, nearly 92.50%, is kept as green. The green parcels consist of parks, lawns, play grounds, agricultural lands, road berms, forest patches, and the botanical garden. The botanical garden of the university was established in 1975 and is spread in 24.71 acres of land. It has about 500 species of trees, shrubs and medicinal plants. It houses open air theatre, lily pool, aquatic pond, fern house and herbal garden. Some of the glimpses of green spaces of the campus are as under.



**Glimpses of Tree Cover around Buildings of the University**





**Glimpses of Tree Cover along Roads of the University**



**Glimpses of Romanticism of Footpaths**



**Glimpses of Lawns of the University**



### 3. Tree Audit

The university is a place to witness different varieties of trees and shrubs. About 143 species of trees and shrubs have been identified in the campus (refer table 1).

**Table 1: List of Trees and Shrubs in GNDU Campus**

| S. No. | Botanical Name of the Plant     | Common Name                           | Approx. No. of Trees/ Shrubs |
|--------|---------------------------------|---------------------------------------|------------------------------|
| 1.     | <i>Acacia auriculaeformis</i>   | Australian Kikar                      | 75                           |
| 2.     | <i>Aegle marmelos</i>           | Bael                                  | 94                           |
| 3.     | <i>Ailanthus sp.*</i>           | Tree Of Heaven                        | 1                            |
| 4.     | <i>Albizia procera</i>          | White Siris                           | 28                           |
| 5.     | <i>Albizia lebbeck</i>          | Sareen                                | 48                           |
| 6.     | <i>Alstonia scholaris</i>       | Sat Pati                              | 1080                         |
| 7.     | <i>Acacia nilotica</i>          | Kikar                                 | 15                           |
| 8.     | <i>Araucaria cunninghamii</i>   | Christmas Tree                        | 44                           |
| 9.     | <i>Artocarpus heterophyllus</i> | Jack Fruit                            | 8                            |
| 10.    | <i>Azadirachta indica</i>       | Neem                                  | 240                          |
| 11.    | <i>Bambusa ventricosa</i>       | Budda Bamboo                          | 8                            |
| 12.    | <i>Bambusa vulgaris</i>         | Yellow Bamboo                         | 22                           |
| 13.    | <i>Bauhinia tomentosa*</i>      | Yellow Bauhinia                       | 03                           |
| 14.    | <i>Bauhinia purpurea</i>        | Lal Kachnar/ Purple Bauhinia          | 38                           |
| 15.    | <i>Bauhinia variegata</i>       | Kachnar                               | 183                          |
| 16.    | <i>Bischofia javanica</i>       | Bishop Wood Tree/ Java Cedar          | 15                           |
| 17.    | <i>Bombax ceiba</i>             | Simbal/ Red Silk Cotton Tree          | 156                          |
| 18.    | <i>Bougainvillea glabra</i>     | Baugan Bel                            | 1400                         |
| 19.    | <i>Butea monosperma</i>         | Palash/ Dhak/ Flame Of Forest         | 508                          |
| 20.    | <i>Caesalpinia pulcherrima</i>  | Krishna-Charan/ Peacock Flower        | 5                            |
| 21.    | <i>Callistemon lanceolatus</i>  | Bottle Brush                          | 381                          |
| 22.    | <i>Calliandra tweedi</i>        | Red Tassel Flower                     | 32                           |
| 23.    | <i>Camphora sp.</i>             | Camphor Tree                          | 3                            |
| 24.    | <i>Carica papaya</i>            | Papita                                | 142                          |
| 25.    | <i>Coriaria nepalensis*</i>     | Masuri Berry                          | 10                           |
| 26.    | <i>Caryota urens</i>            | Fishtail Palm                         | 28                           |
| 27.    | <i>Cassia biflora*</i>          | Desert Cassia                         | 4                            |
| 28.    | <i>Cassia fistula</i>           | Amaltas                               | 550                          |
| 29.    | <i>Cassia glabra</i>            | Glabra                                | 61                           |
| 30.    | <i>Cassia glauca</i>            | Pila Amaltas                          | 600                          |
| 31.    | <i>Cassia javanica</i>          | Java Cassia                           | 6                            |
| 32.    | <i>Cassia siamea</i>            | Seemia/ Kassod                        | 94                           |
| 33.    | <i>Casuarina equisetifolia</i>  | Junglisaru/ Beef Wood/ Whistling Pine | 32                           |
| 34.    | <i>Cedrela toona</i>            | Tun/ Chitti Sirinh                    | 61                           |
| 35.    | <i>Cestrum nocturnum</i>        | Rat Ki Rani                           | 345                          |
| 36.    | <i>Chukrasia tabularis</i>      | Indian Mahogany/Chikrasi              | 717                          |
| 37.    | <i>Citrus limon</i>             | Lemon                                 | 192                          |
| 38.    | <i>Citrus aurantium*</i>        | Bitter Orange                         | 17                           |
| 39.    | <i>Citrus jambhiri</i>          | Jambhiri/ Rough Lemon/Jati-Khatti     | 47                           |
| 40.    | <i>Clerodendron inerme</i>      | Sankuppi/ Wild Jasmine                | 1400                         |
| 41.    | <i>Combretum indicum*</i>       | Madhu Malati/ Chinese Honeysuckle     | 12                           |
| 42.    | <i>Cordia dichotoma</i>         | Lasooda                               | 75                           |
| 43.    | <i>Cupressus sempervirens*</i>  | Mediterranean Cypress                 | 60                           |
| 44.    | <i>Cycas circinalis</i>         | Queen Sago                            | 15                           |
| 45.    | <i>Cycas Revoluta</i>           | Sago Palm                             | 4                            |
| 46.    | <i>Dalbergia sissoo</i>         | Sheesam                               | 3100                         |
| 47.    | <i>Delonix regia</i>            | Gulmoher                              | 197                          |



|      |                                |                                      |      |
|------|--------------------------------|--------------------------------------|------|
| 48.  | <i>Dendrocalamus strictus</i>  | Male Bamboo                          | 244  |
| 49.  | <i>Dillenia indica</i>         | Chalta/ Elephant Apple               | 8    |
| 50.  | <i>Diospyros spp.*</i>         |                                      | 10   |
| 51.  | <i>Dyopsis lutescens</i>       | Areca Palm/ Butterfly Palm           | 27   |
| 52.  | <i>Erythrina indica*</i>       | Indian Coral Tree                    | 2    |
| 53.  | <i>Embilica officinalis</i>    | Amla                                 | 52   |
| 54.  | <i>Eugenia jambolana</i>       | Jambolan/Java Plum                   | 96   |
| 55.  | <i>Eucalyptus sp.</i>          | Safeda                               | 5460 |
| 56.  | <i>Ficus benghalensis</i>      | Bodar/ Bargad/ Banyan Tree           | 149  |
| 57.  | <i>Ficus benjamina</i>         | Weeping Fig/ Pukar                   | 191  |
| 58.  | <i>Ficus blackeana</i>         |                                      | 9    |
| 59.  | <i>Ficus elastica</i>          | Rubber Tree                          | 61   |
| 60.  | <i>Ficus goldiana</i>          |                                      | 28   |
| 61.  | <i>Ficus infectoria</i>        | Pilkhan/ White Fig                   | 78   |
| 62.  | <i>Ficus lyrata*</i>           | Fiddle Leaf Fig                      | 04   |
| 63.  | <i>Ficus panda</i>             |                                      | 50   |
| 64.  | <i>Ficus religiosa</i>         | Pipal                                | 161  |
| 65.  | <i>Ficus retusa</i>            | Kamarup/ Laurel Fig                  | 229  |
| 66.  | <i>Galphimia gracilis*</i>     | Gold Shower                          | 7    |
| 67.  | <i>Gardenia jasminoides</i>    | Gandhraj/ Cape Jasmine               | 52   |
| 68.  | <i>Gmelina asiatica</i>        | Nag-Phul                             | 24   |
| 69.  | <i>Grevillea robusta</i>       | Silver-Oak                           | 190  |
| 70.  | <i>Grewia asiatica</i>         | Phalsa                               | 17   |
| 71.  | <i>Hamelia patens</i>          | Hamelia/Scarlet Bush                 | 470  |
| 72.  | <i>Hibiscus rosa-sinensis</i>  | China Rose                           | 1400 |
| 73.  | <i>Hibiscus mutabilis</i>      | Cotton Rose                          | 50   |
| 74.  | <i>Hyophorbe lagenicaulis</i>  | Champagne Palm                       | 31   |
| 75.  | <i>Ixora chinensis</i>         | Chinese Ixora                        | 02   |
| 76.  | <i>Jacaranda mimosifolia</i>   | Neeli Gulmohur                       | 307  |
| 77.  | <i>Jatropha curcas</i>         | Biodiesel Plant                      | 6    |
| 78.  | <i>Jatropha panduraefolia</i>  | Bio-Diesel Plant                     | 296  |
| 79.  | <i>Kigelia pinnata</i>         | Balam Khira/ Sausage Tree            | 66   |
| 80.  | <i>Koelreuteria paniculata</i> | Gulabi Neem                          | 89   |
| 81.  | <i>Lagerstroemia indica</i>    | Saoni/ Crape Myrtle                  | 78   |
| 82.  | <i>Lagerstroemia speciosa</i>  | Jaral/ Giant Crape Myrtle            | 29   |
| 83.  | <i>Lawsonia inermis</i>        | Mehndi                               | 292  |
| 84.  | <i>Livistonia chinensis</i>    | Chinese Palm                         | 146  |
| 85.  | <i>Leucaena leucocephala</i>   | Lamtora/ Safed Babool/ Wild Tamarind | 936  |
| 86.  | <i>Madhuca indica</i>          | Madua                                | 16   |
| 87.  | <i>Magnolia grandiflora</i>    | Him Champa                           | 5    |
| 88.  | <i>Mangifera indica</i>        | Aam                                  | 125  |
| 89.  | <i>Melia azadirach</i>         | Dhrek                                | 306  |
| 90.  | <i>Michelia sp.</i>            | Champika                             | 12   |
| 91.  | <i>Millingtonia hortensis</i>  | Neem Chameli/ Indian Cork Tree       | 5    |
| 92.  | <i>Milettia ovalifolia</i>     | Moulmein Rose Wood                   | 27   |
| 93.  | <i>Mimusops elegani</i>        | Morshree/ Spanish Cherry             | 70   |
| 94.  | <i>Mimusops hexandra</i>       | Khirmi Tree                          | 3    |
| 95.  | <i>Morus nigra</i>             | Shahtoot/Black Mulberry              | 1203 |
| 96.  | <i>Morus alba</i>              | White Mulberry                       | 178  |
| 97.  | <i>Moringa oleifera</i>        | Sejana/ Drumstick Tree               | 33   |
| 98.  | <i>Murraya exotica</i>         | Kamini/ Orange Jasmine               | 363  |
| 99.  | <i>Murraya koenigii</i>        | Kadi Pata                            | 377  |
| 100. | <i>Neolamarckia cadamba</i>    | Kadam                                | 41   |
| 101. | <i>Nerium oleander</i>         | Kanel/ Kaner                         | 750  |
| 102. | <i>Ochna squarrosa</i>         | Ramdhan Champa/ Golden Champak       | 103  |
| 103. | <i>Oncoba Spinosa</i>          | Fried Egg Tree                       | 4    |

|              |                                  |                                 |              |
|--------------|----------------------------------|---------------------------------|--------------|
| 104.         | <i>Oreodoxa regia</i>            | Florida Royal Palm              | 19           |
| 105.         | <i>Oroxylum indica</i>           | Broken Bone Plant/ Bhut Vriksha | 9            |
| 106.         | <i>Parkinsonia aculeata</i>      | Vilayti Kikar/ Jellybean Tree   | 2            |
| 107.         | <i>Phoenix sp.</i>               | Khajur                          | 19           |
| 108.         | <i>Pisonia grandis</i>           | Lettuce Tree, Cabbage Tree      | 7            |
| 109.         | <i>Pinus roxburghii</i>          | Chir                            | 9            |
| 110.         | <i>Platanus orientalis</i>       | Chinar                          | 12           |
| 111.         | <i>Platycladus orientalis</i>    | Thuja/ Morpankhi                | 650          |
| 112.         | <i>Plumbago capensis</i>         | Nila Chitrak                    | 60           |
| 113.         | <i>Plumeria alba</i>             | Frangipani                      | 74           |
| 114.         | <i>Plumeria rubra</i>            | Temple Tree                     | 50           |
| 115.         | <i>Polyalthia sp.</i>            | False Ashoka                    | 210          |
| 116.         | <i>Pongamia sp.</i>              | Shukchain                       | 732          |
| 117.         | <i>Prunus domestica</i>          | Alu Bukhara/ Plum               | 46           |
| 118.         | <i>Psidium guajava</i>           | Amrood                          | 406          |
| 119.         | <i>Pterospermum acerifolium</i>  | Kanak Champa/ Muchkund          | 162          |
| 120.         | <i>Pterospermum xylocarpum</i> * | Tada                            | 2            |
| 121.         | <i>Punica granatum</i>           | Anar                            | 356          |
| 122.         | <i>Putranjiva roxburghii</i>     | Putran-Jiva                     | 115          |
| 123.         | <i>Ravenala madagascariensis</i> | Traveler's Palm                 | 12           |
| 124.         | <i>Roystonea regia</i> *         | Florida Royal Palm              | 11           |
| 125.         | <i>Salix babylonica</i> *        | Weeping Willow                  | 10           |
| 126.         | <i>Sapindus mukorossi</i>        | Reetha                          | 15           |
| 127.         | <i>Stercularia alata</i>         | Buddha Coconut                  | 14           |
| 128.         | <i>Schleichera oleosa</i>        | Kusum                           | 331          |
| 129.         | <i>Swietenia mahagoni</i>        | American Mahogany               | 30           |
| 130.         | <i>Syzygium cumini</i>           | Jamun                           | 900          |
| 131.         | <i>Tabebuia argentea</i>         | Golden Bell                     | 100          |
| 132.         | <i>Tabernaemontana sp.</i>       | Pin Wheel Flower                | 1180         |
| 133.         | <i>Tecoma stans</i>              | Piliya/ Yellow Trumpetbush      | 30           |
| 134.         | <i>Tectona grandis</i>           | Teak                            | 170          |
| 135.         | <i>Terminalia arjuna</i>         | Arjun                           | 355          |
| 136.         | <i>Terminalia bellerica</i>      | Bahera                          | 374          |
| 137.         | <i>Terminalia chebula</i>        | Harad                           | 7            |
| 138.         | <i>Thevetia neriifolia</i>       | Pili Kaner                      | 910          |
| 139.         | <i>Terminalia ivorensis</i>      | Black Afara                     | 70           |
| 140.         | Other Coniferous Sp.             |                                 | 50           |
| 141.         | Different Species Of Palms       |                                 | 50           |
| 142.         | <i>Wodyetia bifurcata</i>        | Foxtail Palm                    | 60           |
| 143.         | <i>Ziziphus mauritiana</i>       | Ber                             | 135          |
| <b>Total</b> |                                  |                                 | <b>34878</b> |

\*Only in Botanical Garden

#### 4. Glimpses of Spices of Trees



*Cassia fistula*



*Mangifera indica*



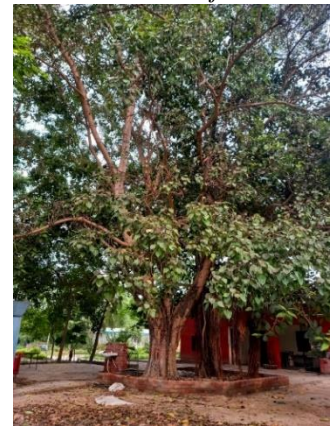
*Terminalia arjuna*



*Polyalthia longifolia*



*Morus alba*



*Ficus religiosa*



*Acacia auriculiformis*



*Tabernaemontana divaricata*



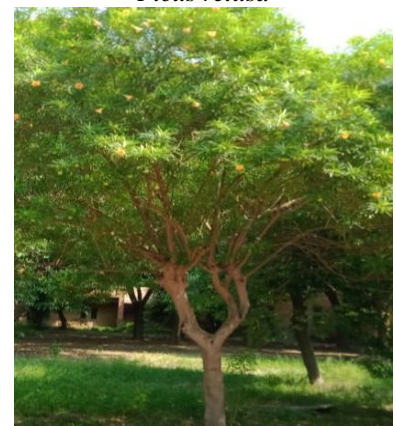
*Ficus retusa*



*Pongamia glabra*



*Delonix regia*



*Thevetia neriifolia*





*Callistemon lanceolatus*



*Pterospermum acerifolium*



*Psidium guajava*



*Bauhinia variegata*



*Chukrasia tabularis*



*Bauhinia purpurea*



*Aegle marmelo*



*Cassia javanica*



*Citrus limon*



*Albizzia lebbek*



*Plumeria rubra*



*Bombax ceiba*







# **Green-Campus**

## **Guru Nanak Dev University**

---

**Prepared by**  
**Internal Quality Assurance Cell, Guru Nanak Dev University, Amritsar**